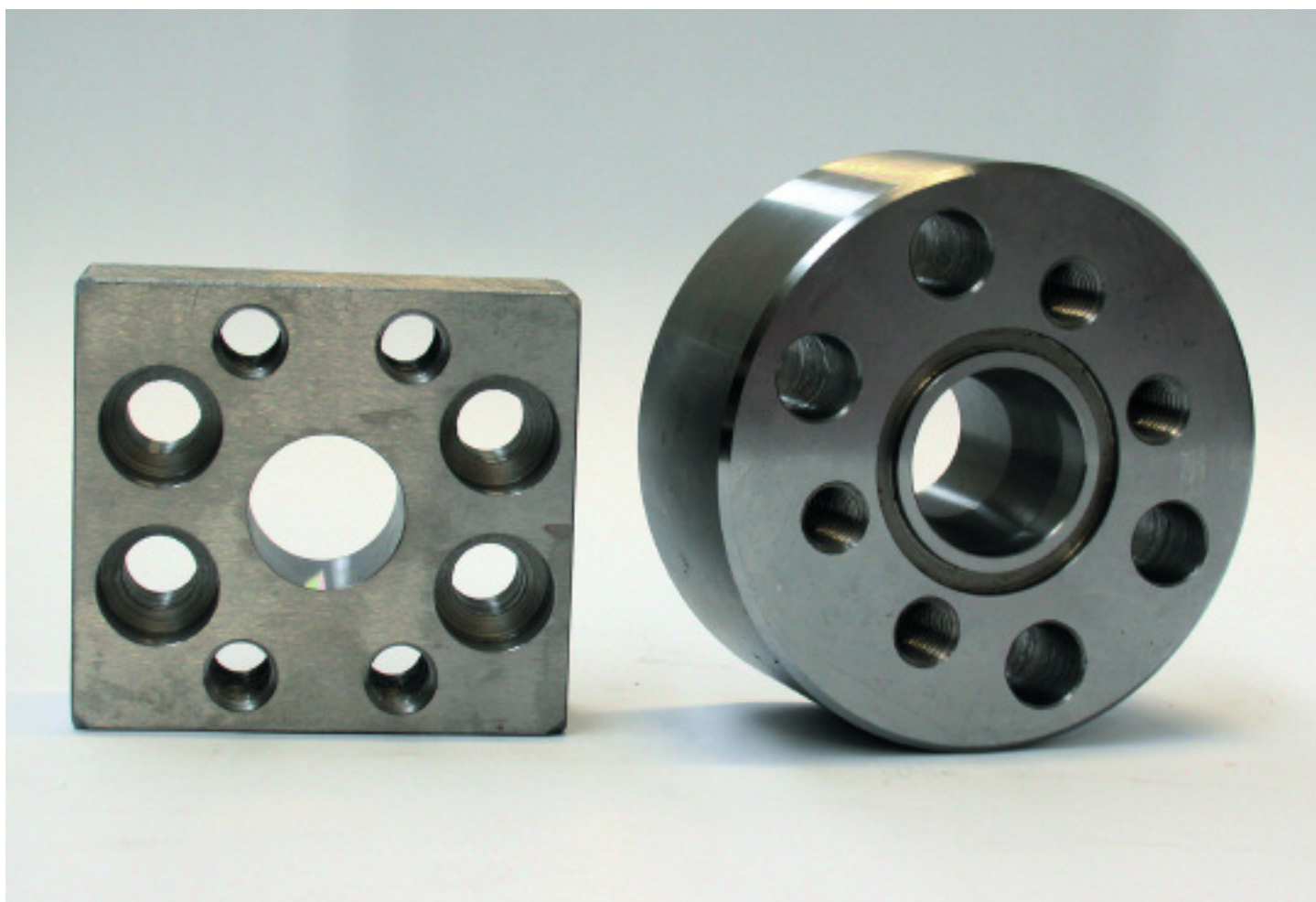


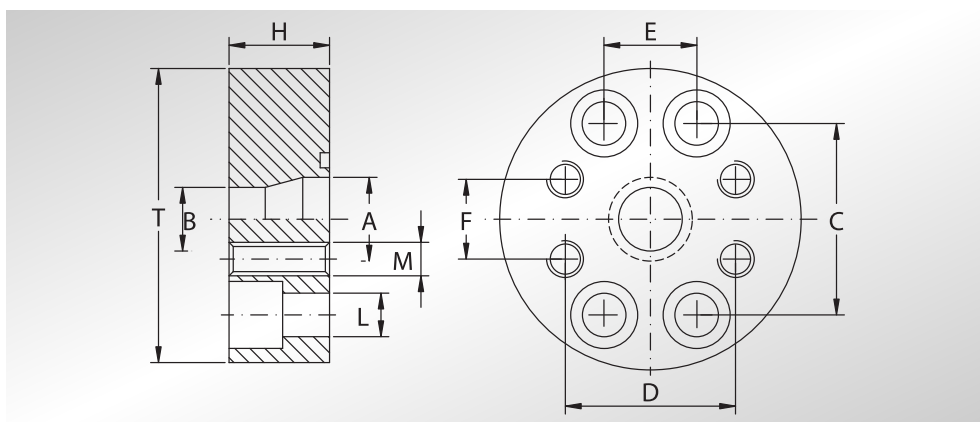
**ADATTATORE SAE  
DI RIDUZIONE**

**SAE REDUCER  
ADAPTER**



# ADATTATORE SAE DI RIDUZIONE

## SAE REDUCER ADAPTER



Pressione max di esercizio raccomandata Kg/cm <sup>2</sup>	Grandezza	Tipo	Dimensioni										Or tipo	Peso Kg
			Dimensions											
Maximum recommended working pressure Kg/cm <sup>2</sup>	Size	Type	A	B	C	D	E	F	H	L	M	T	Or type	Weight Kg
			<b>SERIE 3000</b>											
200	1"	RIF102100	25	19	52,37	47,63	26,19	22,23	28	11	M10	80	4131	0,90
200	1"1/4	RIF104102	30	25	58,72	52,37	30,18	26,19	28	11,5	M10	90	4150	1,15
200	1"1/2	RIF106104	38	30	69,85	58,72	35,71	30,18	32	13,5	M10	105,0	4187	1,70
200	2"	RIF108106	50	38	77,77	69,85	42,88	35,71	32	13,5	M12	115,0	4225	2,00
<b>SERIE 6000</b>														
400	1"	RIF403402	25	19	57,15	50,80	27,76	23,80	30	13	M10	90,0	4131	1,20
400	1"1/4	RIF404403	30	25	66,68	57,15	31,75	27,76	35	15	M12	105	4150	2,00
400	1"1/2	RIF405404	38	30	79,38	66,68	36,50	31,75	50	17	M14	120	4187	3,70
400	2"	RIF406405	50	38	96,82	79,38	44,45	36,50	50	21	M16	145	4225	5,40

DESIGNAZIONE PER ORDINE  
DESIGNATION FOR ORDER

Materiale / Material

NOTE / NOTES

ST52.3

AISI 316L

Adattatore  
Straight Adapter

RIF...

RIFX...